



# Wild Ken Hill

Residents' meetings, June & July 2022



## Introduction

---



***Dominic Buscall, co-manager at Ken Hill***



# What is important to us?

## Wildlife



## Climate



## People



### A POSITIVE IMPACT



91% POSITIVE PUBLIC  
SUPPORT FOR  
REINTRODUCTION OF  
SEA EAGLES



3 NEW  
ROLES IN  
EMPLOYMENT



6 VOLUNTEERING  
OPPORTUNITIES



2 LOCAL  
BUSINESSES  
HOSTED

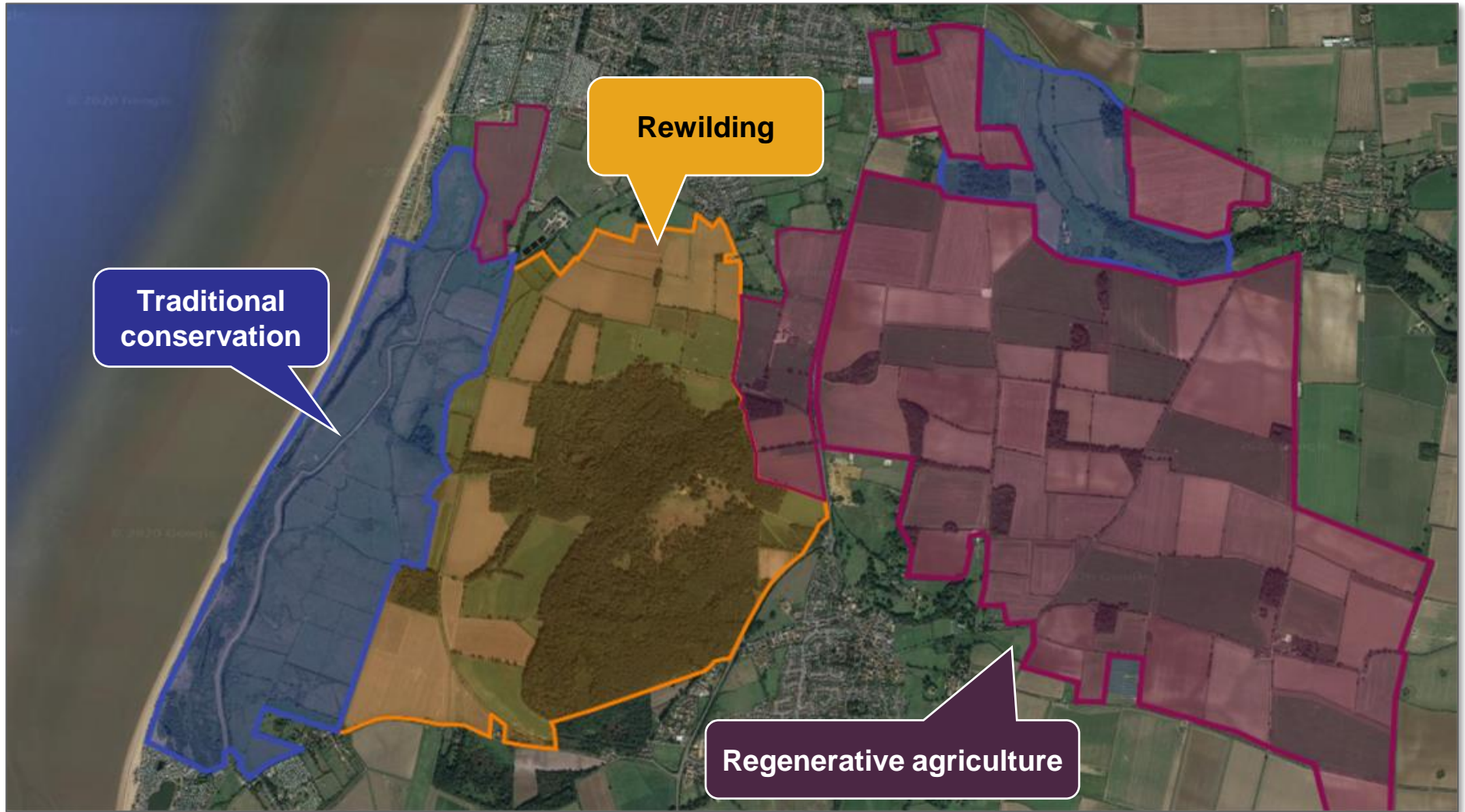


5 MSC STUDENTS  
AT WILD KEN HILL



1 PERFORMING  
ARTS PROJECT  
UNDERWAY

## We developed a three-prong approach of 1) Rewilding, 2) Regenerative Agriculture, and 3) Traditional Conservation



## There is lots of interest in our approach

---



West Norfolk Nature Project Leads the Way on World Rewilding Day

Farm pioneers mixture of 'rewilding' and sustainable agriculture

Norfolk farm fights climate change and impact of Brexit by rewilding

Why 2020 has been good for England's Beavers

From dolphins to rewilding: 11 environment-friendly holidays for 2021

**We need greater facilities to continue educating and hosting residents and visitors**

## Our ethos for development

---

- *Is sustainable – in every sense*
- *Works for local people, addressing concerns and providing opportunities*
- *Educates people about the natural world*
- *Is fun, accessible, and encourages greater connection with the outdoors*
- *Looks natural and beautiful*

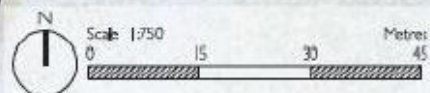






# Site Plan Key

- 1 Muster Point
- 2 Retail / W.Cs (New Build)
- 3 Offices / Studios
- 4 Bike Shop & Rental
- 5 Storage
- 6 Covered Bike Parking
- 7 Main Visitor Building
- 8 Outdoor F&B Seating
- 9 Pay Barrier
- 10 Indoor Play
- 11 Outdoor play
- 12 Bike Skills
- 13 Walking Trails
- 14 Car Park
- 15 Delivery Entrance









**The plan include a new sustainable link between Heacham & Snettisham to improve access and safety**

---





## Process

---

### ***Progress so far:***

- Contribution to Heacham Neighbourhood Plan
- Engagement with KLWNBC Planning Team, AONB, Natural England
- Highways analysis reviewed by NCC
- Technical surveys completed
- Specialists engaged – leading cycling, play, and landscape architects engaged
- Engagement with Heacham & Snettisham Parish Councils

### ***Next steps:***

- Engagement with local businesses and residents (today's meeting)
- Preparation of detailed architecture and plans for submission of planning application

## Questions and comments

